



- Address:** 10955 West Pico Boulevard, Los Angeles, CA 90064
- Available Space:** Approximately 2,700 square feet.
- Parking:** 8 exclusive parking spaces (see attached map);
- Asking Rate:** \$2.95 NNN per square foot per month. Tenant to pay its pro-rata share of real property taxes, property and general liability insurance, common area repairs and maintenance, estimated at 29¢ per square foot per month.
- Comments:**
- ▶ Located on the hard corner at a signalized intersection;
 - ▶ Approximately 60,066 cars pass this location daily;
 - ▶ Neighbors include the Anawalt Lumber, Barbeques Galore, Centinela Feed & Pet, Smart & Final, Party City, Guitar Center, Google (coming soon) and many other nationally and regionally recognized stores and restaurants.

For further information
or tour, please
contact exclusive agents:

Marc Pollock

License #00881177

Marc@WestsideRetail.com

Mark Einbund

License #00826287

Mark@WestsideRetail.com

11847 Gorham Avenue
Suite 120

Los Angeles, CA 90049

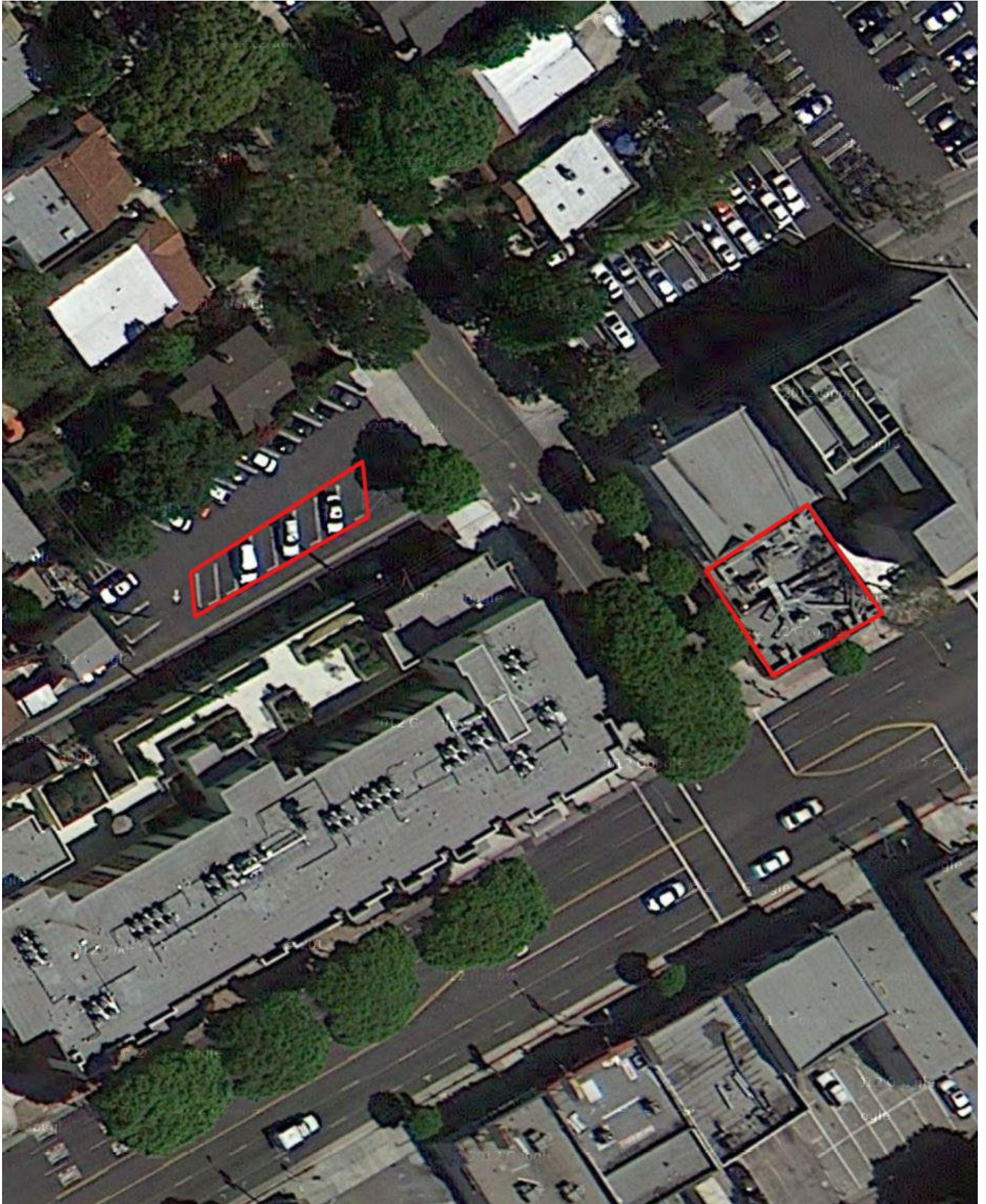
Phone 310.826.8000

Fax 310.826.8333

Additional information on this
property can be found online at
www.WestsideRetail.com



**10955 WEST PICO BOULEVARD
LOS ANGELES, CA 90064**



The information contained on this site plan is for illustration purposes only, not drawn to scale, and not intended to make any representation or warranty as to the actual number of parking spaces, or to the size, nature of improvements, identity or location of any existing or proposed tenant. It is your responsibility to independently confirm its accuracy and completeness. You and your advisors should conduct a careful, independent investigation of the property to determine to your satisfaction the suitability of the property for your needs. Westside Retail, Inc. 2019

VETERAN AVENUE



The information contained on this site plan is for illustration purposes only, not drawn to scale, and not intended to make any representation or warranty as to the actual number of parking spaces, or to the size, nature of improvements, identity or location of any existing or proposed tenant. It is your responsibility to independently confirm its accuracy and completeness. You and your advisors should conduct a careful, independent investigation of the property to determine to your satisfaction the suitability of the property for your needs. Westside Retail, Inc. 2019